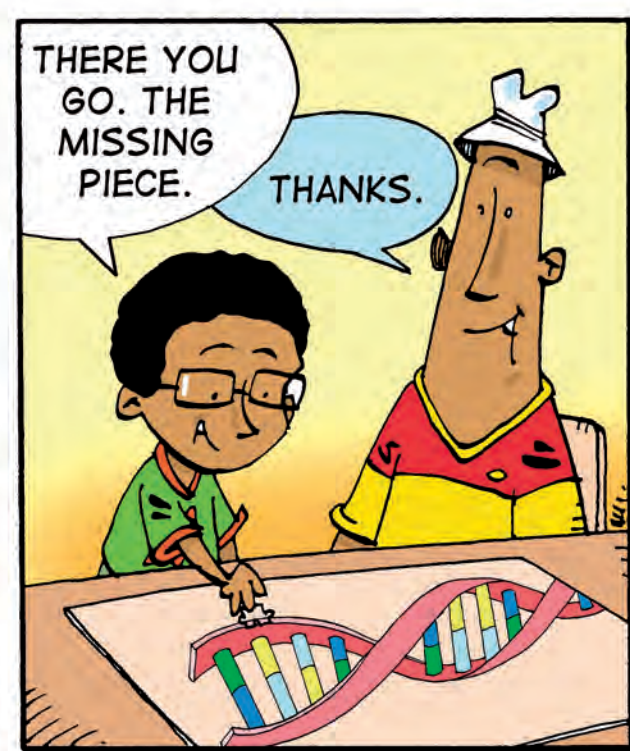
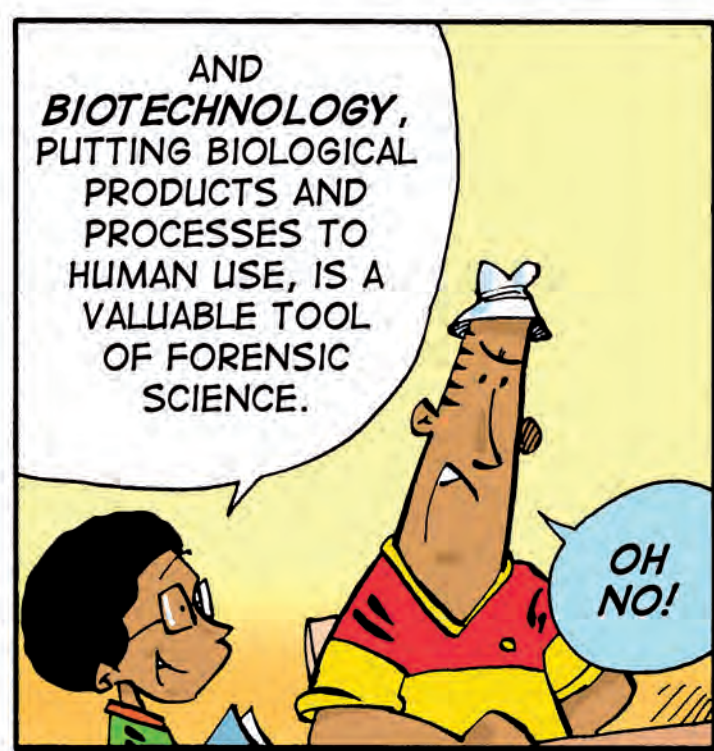
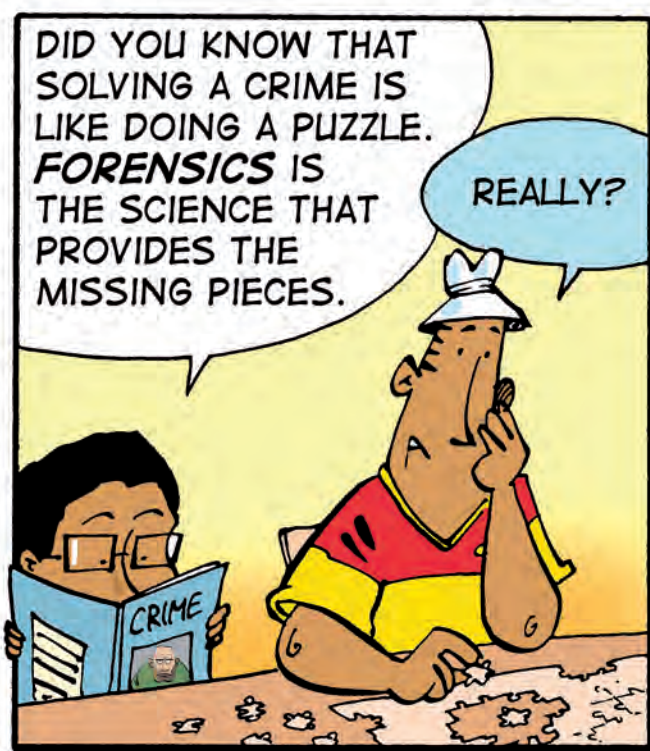
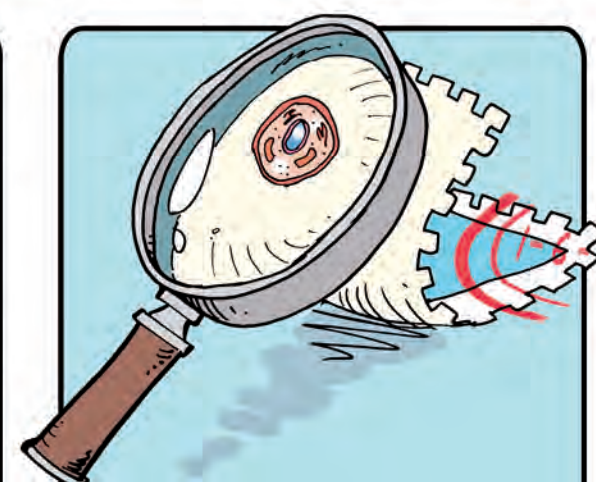
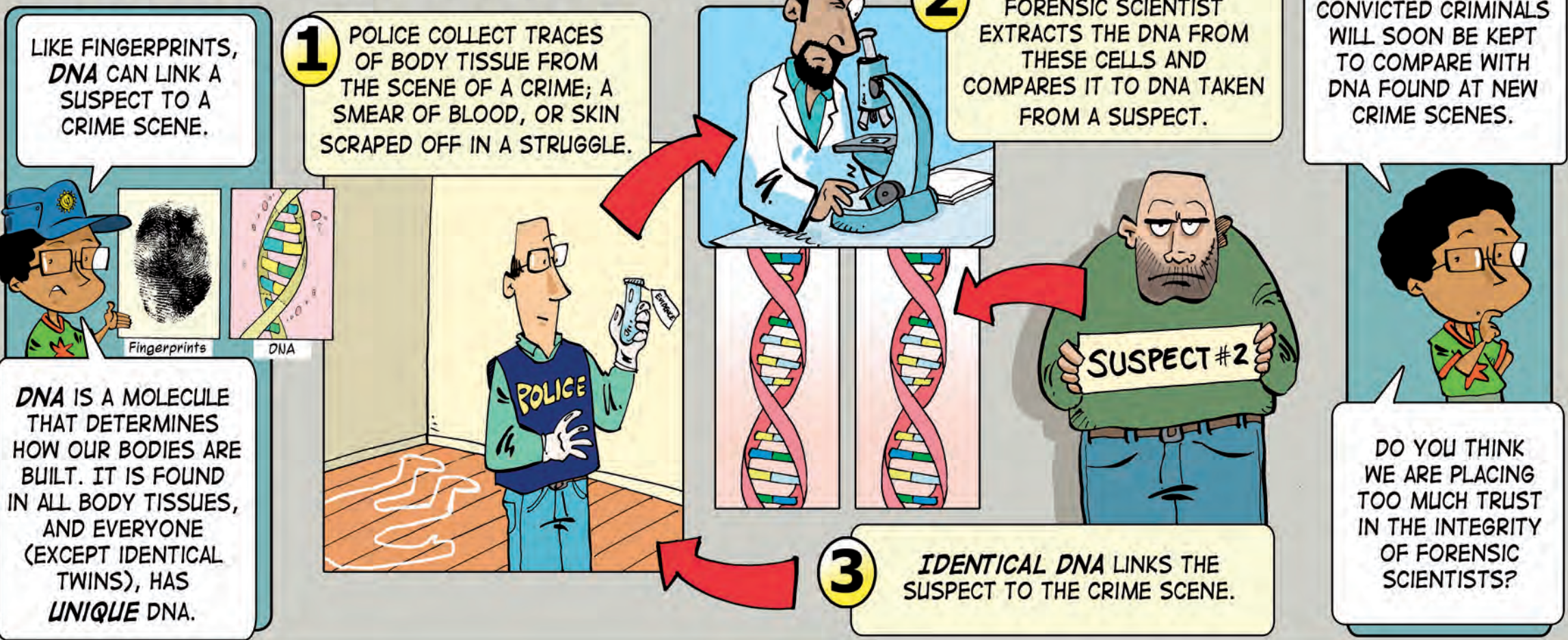


# BIOTECHNOLOGY: FORENSICS



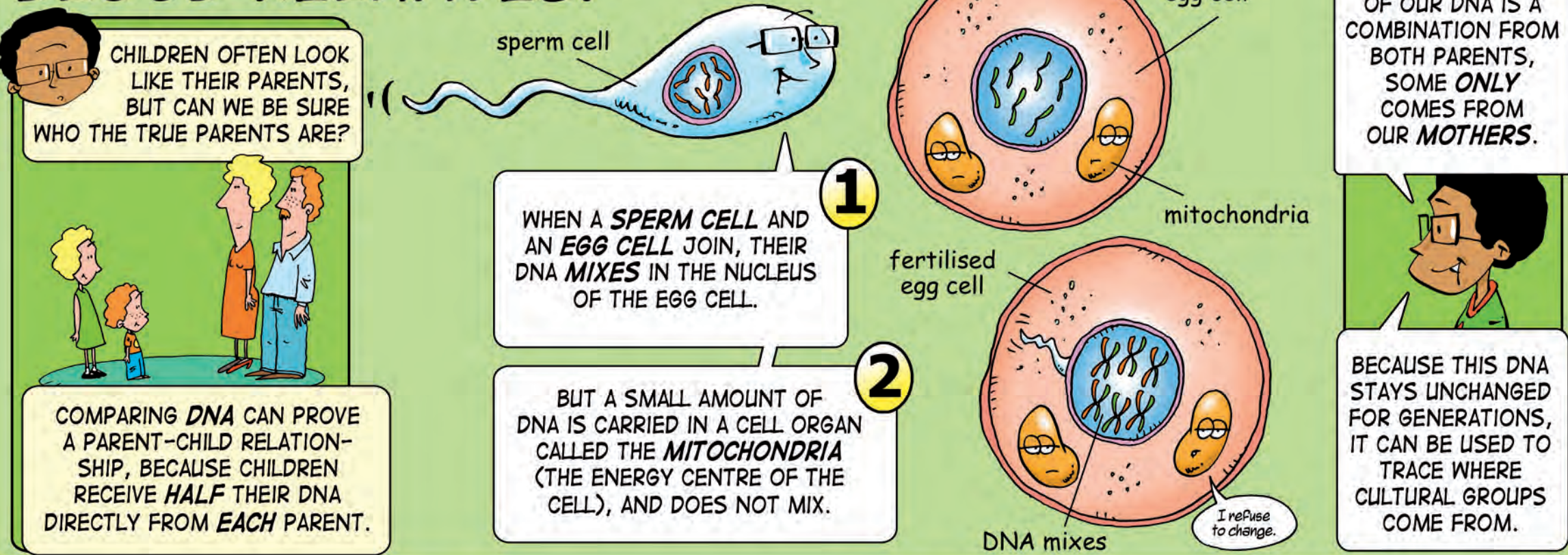
## DNA FINGERPRINTING



A SUSPECT HAS BEEN CONVICTED BECAUSE OF DNA FOUND ON THE BACK OF A **STAMP**! SALIVA CONTAINS SMALL QUANTITIES OF CELLS, FROM THE WALLS OF THE MOUTH. THESE WERE LEFT ON THE STAMP WHEN THE SUSPECT LICKED IT - POSITIVELY LINKING HIM TO THE CRIME.

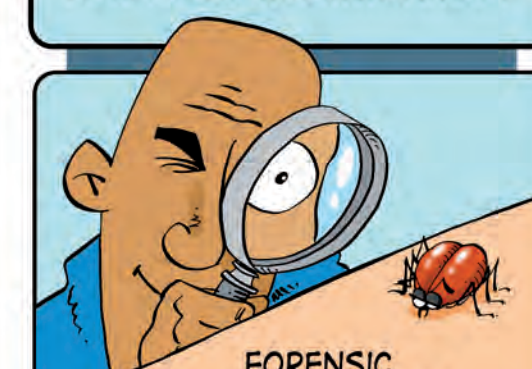
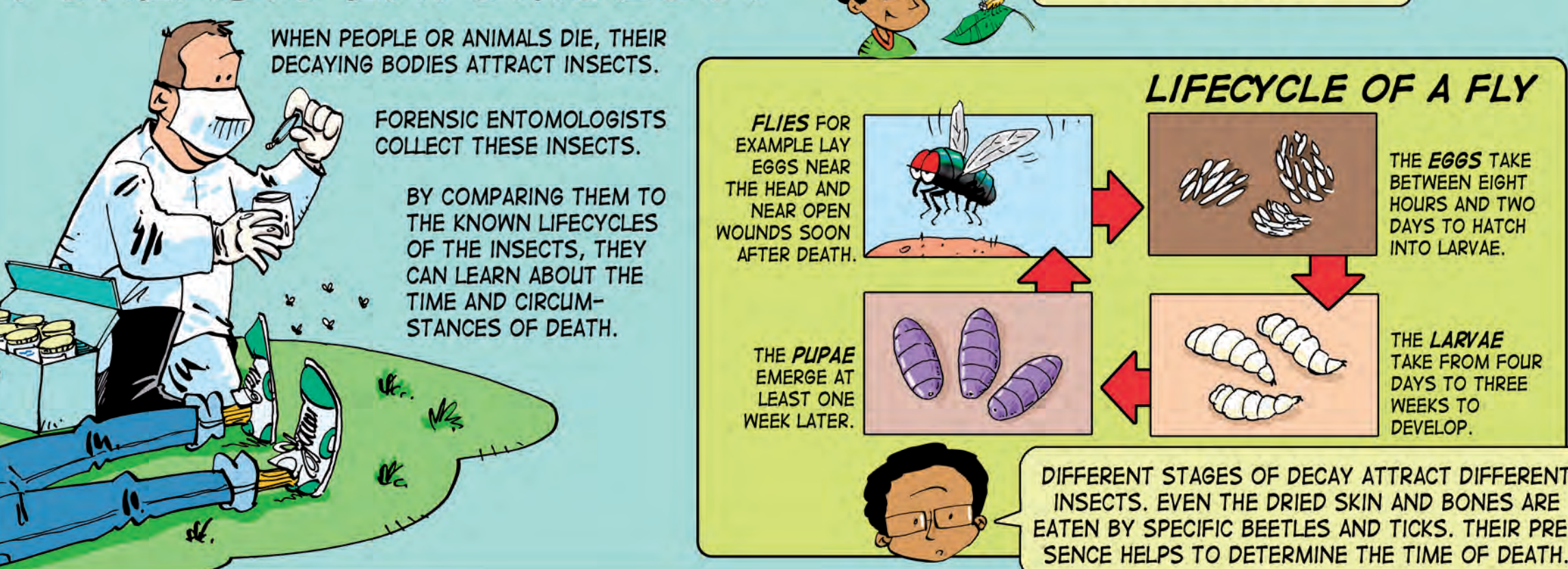


## BLOOD RELATIVES?



THE **LEMBA TRIBES**-PEOPLE OF SOUTH AFRICA HAVE LONG BELIEVED THAT THEY ARE DESCENDED FROM ONE OF **ISRAEL'S TWELVE TRIBES**. DNA TESTING HAS NOW REVEALED STRONG SIMILARITIES BETWEEN THIS TRIBE AND SOME JEWISH COMMUNITIES.

## FORENSIC ENTOMOLOGY



FORENSIC ENTOMOLOGISTS INVESTIGATING SOUTH AFRICAN SERIAL KILLER MOSES SITHOLE DETERMINED THE TIME OF DEATH OF HIS VICTIMS BY THE PRESENCE OF SPECIFIC INSECTS. THIS HELPED THEM DETERMINE A PROFILE OF THE KILLER, LEADING TO HIS ARREST.